



AV DRIVE TECH



INNOVATIVE ENGINEERING
LASTING SOLUTIONS

Authorized Dealer of



PREMIUM
TRANSMISSION

wilo

Mather+Platt

A WILO BRAND



Bharat Bijlee

About Us

Welcome to **AV DRIVE TECH**, your trusted partner for premium transmission products. Since our inception in 2010, we have been at the forefront of delivering Premium Transmission Ltd of high-quality gearboxes, and over the years, we've expanded our product range to include world-class brands in the water pumps and bearing sectors. Today, we proudly serve a diverse clientele across industries, providing them with reliable, durable, and performance-driven products that help optimize operations.

Our Story

Founded in 2010, **AV DRIVE TECH** began as a specialized gearbox dealer of **PREMIUM TRANSMISSION LIMITED** offering a wide selection of mechanical power transmission to meet the demands of various industries. Over the years, our commitment to quality and customer satisfaction allowed us to grow and diversify our product offering, ensuring that we meet the evolving needs of our customers.

In response to increasing demand and our desire to expand our service offerings, we partnered with two globally recognized brands : **WILO MATHER PLATT PUMPS (German)** and **BHARAT BIJLEE**. These strategic partnerships have allowed us to offer high-performance water pumps and electrical motors, further solidifying our position as a leading provider of power transmission and fluid management solutions.

What We Offer

- Industrial Gearboxes, Water technology Pumps, Fluid Couplings and Motors
- Supply of Gearboxes and Pumps Spares
- Overhauling & Servicing of all kind of Gearboxes, Fluid Couplings and Pumps.
- Annual Maintenance Contract
- Reverse Engineering
- Energy Audits
- Conduct Seminar & Maintenance Training Programme

Why Choose AV Drive Tech?

- **Expertise and Experience:** With over a decade of experience in the gearbox industry and expertise in pumps and motors, our team understands the technical requirements of each product we offer, ensuring that we provide the best solutions for your needs.
- **Customized Solutions:** Our team works closely with you to provide solutions tailored to your specific needs.
- **World-Class Brands:** Our partnerships with **Premium Transmission Ltd, Wilo Pumps** and **Bharat Bijlee** mean that you have access to world-leading products that are engineered for maximum efficiency and reliability.
- **Quality and Reliability:** At AV DRIVE TECH, quality is our top priority. All our products are sourced from reputable manufacturers known for their innovation, precision, and engineering excellence.
- **End-to-End Service:** From product selection and technical consultation to after-sales support and installation assistance, we are with you at every step of the process to ensure your systems run smoothly.
- **Competitive Pricing:** We offer competitive pricing without compromising on quality, helping you get the best value for your investment.
- **Timely Delivery:** We are committed to delivering your orders on time, with one of the best delivery timelines in the industry.

At **AV DRIVE TECH**, we are committed to delivering exceptional products and services that empower your business. With our extensive product range, industry expertise, and customer-first approach, we provide solutions that enhance your operational efficiency, reduce costs, and improve performance.

Whether you're in need of high-performance gearboxes, pumps and electrical motors, **AV DRIVE TECH** is here to support your business with the right solutions.

AV DRIVE TECH – Powering Your Success with Quality Gearboxes, Pumps and Electrical Motors.

**PREMIUM
TRANSMISSION**

PREMIUM TRASMISSION

Greaves Gears have been the leaders in power transmission for over four decades now, always keeping ahead by setting new benchmarks in quality, product design and value for money to the customers. Highly reliable, fit & forget technology ensures long lasting, hassle free performance. Manufactured in modern, ISO 9001:2000 certified plants, Greaves Gears reach the customer through an extensive branch and dealer network that ensures unmatched application and service support. Over a million gears operating in India and the world over constitute the most complete range to suit every requirement. Under 'Premium', with greater focus and new technology initiatives, Greaves Gears are set to redefine their leadership yet again.

WILO PUMPS

Mather and Platt started its Indian operations in 1913 from Kolkata, and has been fulfilling the need of water supply for more than 100 years in India for segments like building services, water management and industries. We started our operation at Chinchwad works in Pune, Maharashtra in year 1959. Mather and Platt Pump Ltd became part of WILO SE in the year 2005 And in year 2014, WILO Mather and Platt Pumps Ltd. Become WILO Mather and Platt Pumps Pvt. Ltd. In the year 2009 a new state of art manufacturing facility covering over approx. 6000 sq. meters has been built at Kolhapur around 260 km from Pune and The Wilo Group opened its new pump systems plant in Kesurdi, India in 2023. The plant is a 94,000 square meter to manufacture the latest high efficiency products of Wilo India. The Pune, Kolhapur & Kesurdi plants have acquired ISO 9001, ISO 14001 and OSHAS 18001 and all products are CE certified.



BHARAT BIJLEE

Bharat Bijlee (BSE: 503960, NSE: BBL) is a pioneer in electrical engineering in India, and one of the most trusted names in the industry today. Established in 1946, the company has two primary business segments: Power Systems that comprise Transformers and Projects divisions, and Industrial Systems segment comprising Electric Motors, Drives & Industrial Automation and Elevator Systems divisions. The company's manufacturing facilities are located in Airoli, Navi Mumbai on a 1,70,321 square meters campus, with a working area of approximately 50,000 square meters. It has state-of-the-art plants for its Power Transformers and Electric Motors that have been certified for ISO: 9001:2015, ISO: 14001:2015 & ISO 45001:2018 standards.

**Bharat Bijlee**

DODGE

Since 1878, Dodge® mechanical power transmission products have handled the toughest applications, providing the lowest total cost of ownership to our customers. Dodge offers a complete line of mounted bearings, enclosed gearing, mechanical drives, couplings, conveyor components, and IIoT technologies—all engineered and manufactured to perform reliably, with less maintenance. Decades of experience applying mechanical products throughout a wide range of industries means we understand issues that impact productivity and can offer expertise to help improve output and efficiency.



WORM GEARBOXES



"U" TYPE



"V" TYPE



"O" TYPE



DOUBLE REDUCTION

Range : Power range up to 250 kW Reduction Ratio range up to 4900 : 1

Size : Upto 710 mm centre distance

Application : Conveyor, Material Handling, Ball Mill, Agitators, Cranes

ADAPTABLE WORM GEARBOX



FOOT 1



FOOT 2



FOOT 3



AOD

Range : Power range up to 7.5 kW Reduction Ratio range up to 4900 : 1

Size : from size 112 to 337 (28.6 to 85.7 mm centres)

Application : Conveyor, Material Handling, Clarifier, Agitators

HELICAL GEARBOX



"BEVEL GEARBOX"



"HELICAL GEARBOX"



SHAFT MOUNTED

Range : Power range up to 5500 kW

Reduction Ratio range up to 650 : 1

Size : From 125 mm to 900 mm centre distance

Application : Agitators, Conveyors, Crushers, Cranes, Larger Ball Mills, Mixers, Aerators, Coal Pulverising Mills, Plastic Extruders, Fin Cooler Drives, Kneaders, Thickeners

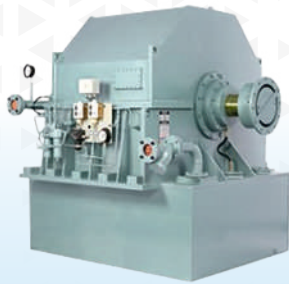
FIXED SPEED FLUID COUPLING



Range : Power range up to 1500 kW

Size : From 8 to 41 Circuit Diameter

Application : Thermal Power Plants, Steel Industry, Cement, Mines, Chemical, Oil, Sugar, etc



VERIABLE SPEED FLUID COUPLING

Range : Power range up to 11000 kW

Size : From 14 to 52 Circuit Diameter

Application : Conveyors, ID Fans, Ball mills, Crushers, Centrifugal pumps etc.



"GEARED MOTORS"

Range : From 0.12KW to 90KW

Size : From 25mm to 120mm Output shaft Diameter

Application : Conveyor, Mixing, Agitators, Cranes, etc



"SPECIAL GEARBOX"

Range : From 0.12KW to 90KW

Size : From 25mm to 120mm Output shaft Diameter

Application : Conveyor, Mixing, Agitators, Cranes, etc



"ALM ALTRA WORM GEARBOX"

Range : Power range From 0.06KW up to 7.5 kW

Reduction Ratio range from 7.5 : 1 up to 1600 : 1

Size : Centre Distance from 30mm to 130mm

Application : Conveyor, Material Handling, Pharma, Packaging, Food Processing, etc



GEARBOX AND FLUID COUPLING SPARES

Reverse engineering / Loose Gears



HORIZONTAL SPLIT CASE PUMP

Volume Flow : upto 18000 m³/hr
Delivery Head : Upto 270m
Temperature : Upto 120C



END SUCTION PUMP

Volume Flow : upto 750 m³/hr
Delivery Head : Upto 170m
Temperature : Upto 120C



VERTICAL TURBINE PUMP

Volume Flow : upto 50000 m³/hr
Delivery Head : Upto 450m
Temperature : Upto 80C



MULTISTAGE RING SECTION PUMP

Volume Flow : upto 1000 m³/hr
Delivery Head : Upto 1800m
Temperature : Upto 160C



VERTICAL SUMP PUMP

Volume Flow : upto 750 m³/hr
Delivery Head : Upto 220m
Temperature : Upto 80C



SUBMERSIBLE SEWAGE PUMP

Volume Flow : upto 8000 m³/hr
Delivery Head : Upto 100m
Temperature : Upto 60C



HORIZONTAL MONOBLOCK PUMP

Volume Flow : upto 25 m³/hr
Delivery Head : Upto 70m
Temperature : Upto 110C



VERTICAL INLINE PUMP

Volume Flow : upto 155 m³/hr
Delivery Head : Upto 235m
Temperature : Upto 100C



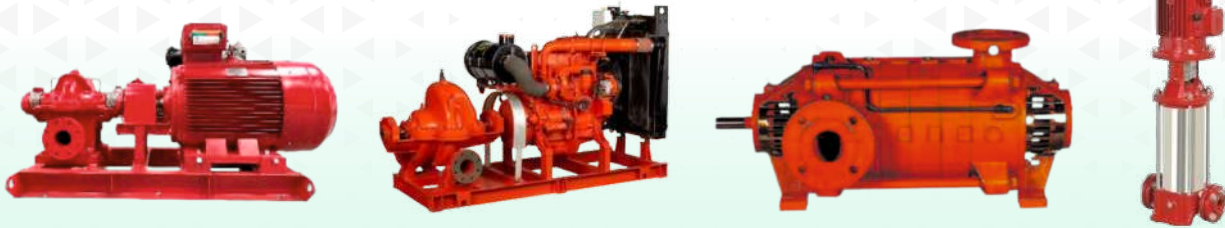
HYDRO BOOSTER PUMP

Volume Flow : upto 800 m³/hr
Delivery Head : Upto 160m
Temperature : Upto 120C



SINGLE / MULTISTAGE PRESSURE BOOSTER PUM

Volume Flow : upto 25 m³/hr
Delivery Head : Upto 68m
Temperature : Upto 110C



FIRE FIGHTING SYSTEM PUMP

Volume Flow : From 155 m³/hr upto 18000 m³/hr

Delivery Head : From 170m Upto 1800m

Temperature : From 100c Upto 160C

Prime Mover : Motor / Engine



SUBMERSIBLE DE-WATERING / CUTTER PUMP

Volume Flow : upto 340 m³/hr

Delivery Head : Upto 68m

Temperature : Upto 40C



Volume Flow : upto 4.25 m³/hr

Temperature : Upto 40C



CIRCULATOR PUMP

Volume Flow : upto 100 m³/hr

Delivery Head : Upto 18m

Temperature : Upto 110C



PUMP SPARES AND MECHANICAL SEAL

OVERHAULING SERVICE WORKS

BEFORE



AFTER



BEFORE



AFTER



BEFORE



AFTER



OVERHAULING SERVICE WORKS



ENERGY AUDIT



ROBERTSON TECHNOLOGY

CONTINUOUS PERFORMANCE AND
CONDITION MONITORING OF PUMPS AND
SYSTEMS

REDUCE ENERGY, MAINTENANCE
AND OPERATING COSTS

PUMP LEVEL

- MicroPM™ Pump Monitor

STATION LEVEL

- Micro Station Monitor™

FEATURES

- Easy to install
- No operating system required
- Microprocessor/firmware based
- Embedded webpages viewable online; Standalone or integrated with SCADA
- Dual sensors in every temperature probe for confidence
- Thermodynamic performance integrated with bearing vibration and temperature sensors

INSTALLATIONS

DODGE BEARINGS



UC BEARINGS



RTL PLAIN BEARING



RAPTOR COUPLING



DODGE GEARBOXES ONE TO ONE
REPLACE FLENDER/SIMENCE GEARBOX



CONVEYOR COMPONENTS

ELECTRICAL MOTORS

Motor Type	Frame	Power (kW)	Polarity		Standard Technical Specifications
IE2 Motors	56 to 355	0.12 to 355	2, 4, 6, 8		<ul style="list-style-type: none"> Ambient: 50° C Ambient for DCCA: 40° C Inverter Grade Winding: For IE3 and DCCA Duty: S1 RTD & BTD: For DCCA motors Mounting: B3, B5, B35, V1, B14 upto 132 frame
IE3 Motors	56 to 355	0.12 to 355	2, 4, 6, 8		
Large LT Motors (DCCA)	355 to 450	250 to 1250	2, 4, 6, 8		
IE4 Motors	112 to 225	1.5 to 45	4		<ul style="list-style-type: none"> Ambient: 50° C Inverter Duty Winding Duty: S1 VPI: With Class H solvent less Resin Mounting: B3, B5, B35, V1
Standard Flame Proof Ex'd' Motors	80 to 355	0.37 to 315	2, 4, 6, 8		<ul style="list-style-type: none"> Ambient: 45° C Inverter Grade Winding: For IE3 Motors Duty: S1 Mounting: B3, B5, B35, V1
IE2 Flame Proof Ex'd' Motors	80 to 355	0.37 to 315	2, 4, 6, 8		
IE3 Flame Proof Ex'd' Motors	80 to 355	0.37 to 315	2, 4, 6, 8		
IE2 Increased Safety Ex ec Motors	63 to 355	0.12 to 355	2, 4, 6, 8		<ul style="list-style-type: none"> Ambient: 50° C Duty: S1 Mounting: B3, B5, B35, V1 (B14 upto 132 Frame)
IE3 Increased Safety Ex ec Motors	63 to 355	0.12 to 355	2, 4, 6, 8		
Crane & Hoist Duty Motors	71 to 355	0.37 to 400	4, 6, 8		<ul style="list-style-type: none"> Ambient: 45° C Duty: S4 Offered in DOL & Converter Fed Supply Mounting: B3, B5, B35, V1 (B14 upto 132 Frame)
Brake Motors (With Integral DC Brake)	71 to 132	0.25 to 9.3	2, 4, 6, 8		<ul style="list-style-type: none"> Ambient: 50° C Duty: S1 Mounting: B3, B5, B35 Integral DC Brake
Brake Motors (With External Mounted Brake)	71 to 200	0.37 to 22	2, 4, 6, 8		<ul style="list-style-type: none"> Ambient: 50° C Duty: S1 Mounting: B3, B5, B35 External Mounted DC Brake/Arrangement
Slip Ring Motors	100 to 160	1.1 to 10	4, 6		<ul style="list-style-type: none"> Ambient: 45° C Duty: S3, S4, S5 Mounting: B3
Textile Motors	100 to 160	1.1 to 15	4, 6, 8		<ul style="list-style-type: none"> Ambient: 50° C Duty: S1 Mounting: B3, B5, B35
Cane Unloader Motors	160 to 225	11 to 30	6		<ul style="list-style-type: none"> Ambient: 45° C Start/Stop per Hour: upto 900 Duty: S5, 50% CDF Thermostat Mounting: B3, B5, B35 Forced Cooling Shaft Material: En24

SEMINAR & MAINTENANCE PROGRAMME



AV DRIVE TECH

GSTIN : 33APAPR8412C1ZA

REGISTERED ADDRESS :

No : 38, (Old No. 69) Venkatarathinam Nagar, ☎
Adayar, Chennai – 600020
avdt06@gmail.com ☎
9677197686 ☎

WORK SHOP ADDRESS

No:13, VLC Kakkanni Nagar, ☎
Vazhuthalampemu, Kundrathaur, Chennai- 69
avdrivetech.in ☎
9940146525, 9566195186 ☎